

Axiom Lite™

SECURITY MANAGEMENT SYSTEM



RBH
ACCESS

Building Security Worldwide

SECURED

AxiomLite stands up to the challenge of bringing together different aspects of security management.



AUTOMATED

Customize the automation of alarms, locks, reports and more with AxiomLite.



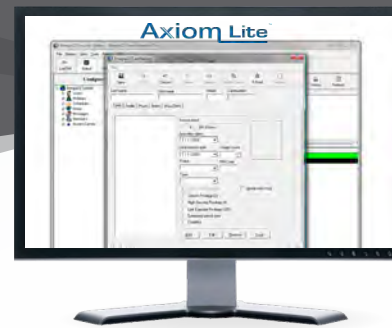
INSIGHTFUL

Alarm Monitoring with Video, Biometric Authentication, Visitor Management and more.



EXPANDABLE

AxiomLite can be the ideal solution for a small office or a multi-site corporation, and when it is time to upgrade the transition can be seamless.



HIGH SECURITY MODE

Dynamically suspend and re-instate access privileges for regular cardholders while maintaining access for specially authorized cards. This mode can be activated by a "Four Swipe", system link, or an operator command from any Security Workstation.

ANTI-PASSBACK

Global and local anti-passback supports soft or hard enforcement and anti-tailgating. This feature also includes scheduled area reset, live status monitoring and timed anti-passback.

FIRST PERSON DELAY

Doors on an automatic unlock schedule will only unlock after the first person with valid ID enters for the day.

MAN TRAP / AIR LOCK / SALLY PORT

A collection of doors where one door of a mantrap cannot be unlocked and opened until the opposite door has been closed and locked, or the person had been identified and approved.

MULTIPLE DOOR ALARMS

Forced entry, door held open, access denied, and panic alarms are available for each access point.

GLOBAL LINK COMMANDS

Turn on lights and HVAC or arm and disarm an alarm system all with a simple swipe of a card. Global link commands allows building automation with unlimited possibilities.

MULTI SWIPE FUNCTIONALITY



2-Swipe

Locks/Unlocks Door

4-Swipe

Door's High Security On/Off

3 & 5-Card Swipe

Custom Actions

ELEVATOR/LIFT CONTROL

AxiomLite provides an inexpensive, simple way to automate access of up to 32 floors per controller.

SCHEDULED LOCK AND UNLOCK

Doors can lock and unlock on multiple pre programmed schedules with safeguards such as first person delay.

EMAILING ALARMS

Allows any system event such as forced entry, door held open, access denied, or even panic alarm to be sent to a desired standard email account on a schedule or in real time.

VISITOR MANAGEMENT

Identify, record, and track visitors within the establishment. Issue temporary IDs, record photos and track their whereabouts.

PHOTO-ID & BADGING

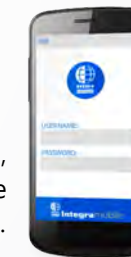
A fully integrated Photo ID module is designed to provide an easy to use and powerful tool for creating high quality personalized credentials.

VMS INTEGRATION

Integrate video with the most popular brands of VMS systems supported. Video can be brought up on alarms, or requests to enter/exit to allow greater visibility.

BROWSER AND MOBILE SUPPORT

Configuring the Web Server on the AxiomLite system, will allow operators to control and administer the security system via a web browser or mobile phone.



INTEGRATED BIOMETRIC SUPPORT

AxiomLite makes use of biometric methods of user identification and verification even more convenient by integrating fingerprint enrollment into the cardholder management screen.

MULTIPLE SITE MANAGEMENT

Control an unlimited number of sites from a single location with individual databases, graphics and history segregation.

ADVANCED CLIENT-SERVER DESIGN

Includes 10 simultaneous full function clients over LAN/WAN.

EXPANDABLE TO 128 DOORS

AxiomLite comes with the ability to control 64 doors, but if more is needed, it is possible to expand to 128 doors.

FIELD UPGRADEABLE TO ENTERPRISE

AxiomLite can grow with you. The controllers are upgradeable to Axiom with a simple, in place firmware upgrade.



Learn more by visiting
RBH-Access.com

HARDWARE COMPARISON					
	IRC-2000 SERIES Intelligent Controllers	URC-2000 SERIES Universal Controllers	URC-2008 Elevator Controller	UNC-100 Universal Network Controller	UNC-100 Universal PoE Network Controller
Panels per Network :	16				
Local PC & Remote Communications :	Supervised RS-232, RS-485 and TCP/IP (via LIF200)	Supervised RS-485 and TCP/IP (via LIF200)		Supervised RS-485 and TCP/IP	
Communication Between Controllers :	Supervised RS-485				
Speed :	Programmable 9.6 - 56Kbps				
Distance :	4,000ft (1,200m)				
Type :	18AWG, 2 conductor, twisted, shielded				
Cards per Panel :	5,000 expandable to 8,000 (up to 10 digit card no's)	3,000 (up to 10 digit card no's)	8,000 (up to 10 digit card no's)		
Access Levels per Panel :	5,000 expandable to 8,000 (one per card per panel)	3,000 (one per card per panel)	8,000 (one per card per panel)		
Site Codes per Panel :	10 (site code programming is not mandatory)				
Off-Line Transactions Buffer :	3,000 FIFO, command, and alarm priority				
Access Points (Readers/Keypads) :	2 with LED and Buzzer control				
Distance :	Max 500ft (150m)				
Type :	20 - 22AWG, 6 or 8 conductor, stranded, shielded				
Simultaneous Card Formats per Panel :	5, Wiegand or Clock & Data			5, Wiegand	
Programmable Supervised Inputs :	8	4			
Input Supervision :	4 state monitoring (1 or 2 resistors)	4 state monitoring (1 or 2 resistors)			
Distance :	Max 1,000ft (300m)	Max 1,000ft (300m)			
Cable Type :	20 - 22AWG, 2 conductor	20 - 22AWG, 2 conductor			
Programmable Outputs :	4 SPDT 5A @ 30VDC, dry contacts	2 SPDT 5A @ 30VDC, dry contacts			
Output mode :	4 Electronic drivers, 12VDC max, 100mA Programmable Fail Safe/ Fail Secure	2 Electronic drivers, 12VDC max, 100mA Programmable Fail Safe/Fail Secure			
Power Requirements :	16.5VAC, 40VA transformer (PCB Only: 2A @ 13.8VDC)		16.5VAC, 40VA transformer (PCB Only: 2A @ 13.8VDC)		Native PoE IEEE 802.3af or IEEE 802.3at
Auxiliary Power Output :	NA				500mA @ 12-14VDC
Recommended Back-up Battery :	12V, 7AH lead acid or gel cell				

Our unified hardware platform is field configurable to work with any RBH software platform.



RBH-INT-UNC100



RBH-URC-2004



RBH-URC-2005



RBH-IOC8



RBH-EXITRDR



PROXIMITY



iCLASS



VIRTUAL



MIFARE



BIOMETRIC



Learn more by visiting

RBH-Access.com