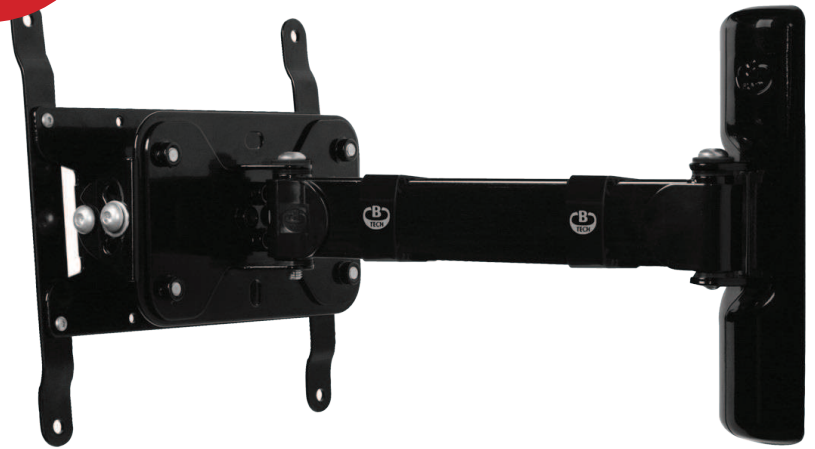




BT7514

SINGLE ARM FLAT SCREEN WALL MOUNT WITH TILT & SWIVEL

ALTERNATIVE
SHORT ARM
INCLUDED



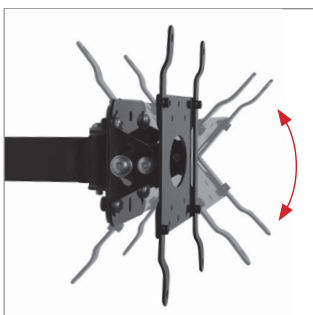
Designed to mount medium sized flat screens, the BT7514 features a single swivel arm with easy tilt adjustment. The wall plate features 'OWLS' on wall levelling system to ensure a straight and smart installation. The BT7514 is also compatible with B-Tech's range of poles and collars, increasing the number of different ways it can be mounted, ideal for commercial applications as well as home installations. Security screws are provided to help prevent unauthorised removal of the screen.

SPECIFICATION

| | |
|-------------------------|------------------------|
| Recommended screen size | up to 47" |
| Max load | 25kg |
| VESA® compatibility | up to 200 x 200 |
| Tilt | +/- 40° |
| Swivel | 180° (at wall) |
| Distance from wall | Min: 95mm - Max: 336mm |
| Colour | Black |

FEATURES

- Easy tilt and swivel adjustment
- Features two swivel points: 180° at wall and 240° at interface
- Alternative short arm included
- Folds flat to the wall
- Features On Wall Levelling System for perfect mounting
- Includes CLIPLOGIC® cable management
- Coverplates included for a neat and tidy installation
- Includes Security locking screws and Allen key to prevent unauthorised removal of the screen
- Simple 'hook-on' installation with all mounting hardware included



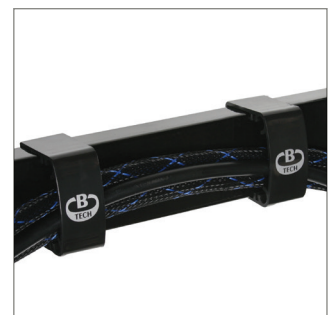
Easy tilt adjustment of +/-40°



Security locking screws provided



Alternative short arm also included



CLIPLOGIC™ cable management

