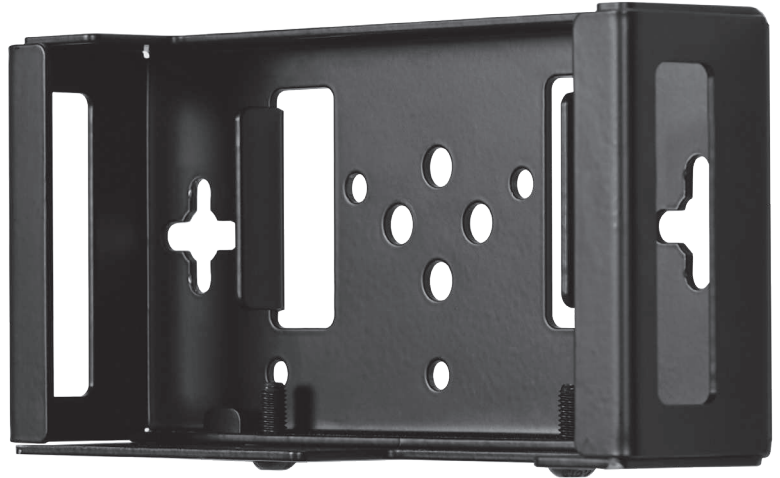




**FEATURES
AN OPEN DESIGN
FOR GREATER
AIRFLOW**

BT7886

MERSIVE SOLSTICE POD MOUNTING CRADLE



The BT7886 is a mounting cradle designed to securely mount a Mersive Solstice Pod onto a wall or desk, to a B-Tech accessory collar, or to the back of a display using any screen mount. The open design of the cradle helps to keep the Solstice Pod cool when in use and an integrated slot to add a Kensington lock (lock not included) helps prevent unauthorised removal of the device. B-Tech AV Mounts is an official Mounting Partner of Mersive Technologies.

SPECIFICATION

Designed for use with	Mersive Solstice Pod
Dimensions	W:189mm H: 43mm D: 96mm
Colour	Black

FEATURES

- Designed to securely hold a Mersive Solstice Pod
- Security screws to prevent easy removal of Pod
- Can be fixed directly to a wall, B-Tech collar or underneath a desk
- Supplied with an attachment plate for securing to flat screen mounting arms
- Compatible with Kensington Slot Locks



Can be fitted to poles using B-Tech Accessory Collars.



Can also be mounted directly to a wall.



Security screws to prevent easy removal of Pod device.



Compatible with Kensington Slot Locks.

