



AVAILABLE
 IN MULTIPLE
 CONFIGURATIONS

BT8350

MODULAR FREESTANDING VIDEOWALL MOUNT

The BT8350 is a modular freestanding videowall mounting system. Available for use in both landscape and portrait configurations, the BT8350 can be used for installations up to 7 rows high and as many columns wide as desired. The modular design and captive, fast-fit connectors make assembly and disassembly of videowalls extremely quick and easy whilst the tool-less micro-adjustment allows screens to be perfectly aligned with ease.

SHOWN IN A 2X2
 CONFIGURATION



SPECIFICATION	
For screen sizes	46", 49" and 55"
Max load	50kg per screen
VESA® compatibility	200 x 200 up to 600 x 400

FEATURES

- Modular design allows quick and easy assembly and disassembly of videowalls - perfect for rental applications
- Order to your exact requirements, anything from 2x2 to 70x7
- Can be ordered for landscape or portrait screen mounting
- Tool-less micro-adjustments for seamless display alignment
- Captive, fast-fit nuts and screws make assembly and disassembly quick and easy
- Durable Epoxy powder coated frame is ideal for repeated assembly
- Safety screws help prevent unauthorised removal of screens
- Adjustable support bar provides added stability to videowall installations
- Floor spacers with cosmetic covers included for smart installation
- Base sections can face backwards if desired



SYSTEM X

**Landscape / portrait must be specified when ordering, a landscape kit can be used in portrait orientation with a few additional parts*

55"
140CM

VESA
600 x 400

50KG

PER SCREEN



Tool-less micro-adjustment for seamless display alignment



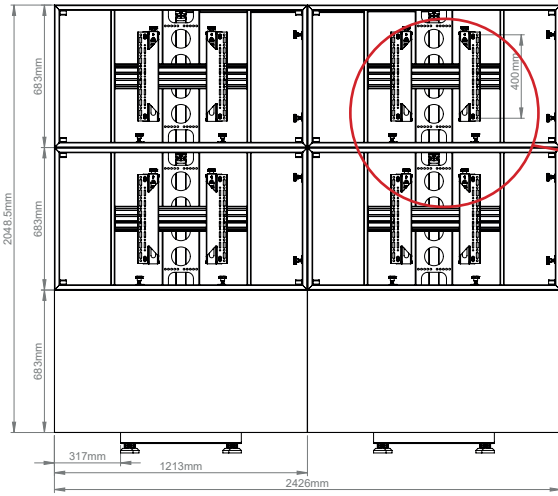
Cosmetic covers are included as standard display alignment



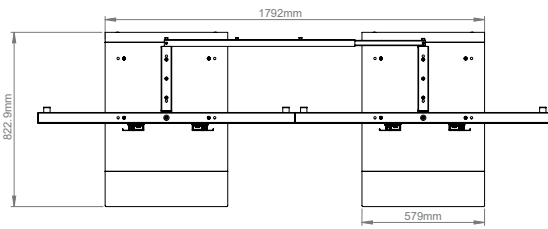
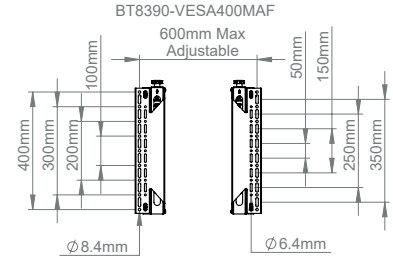
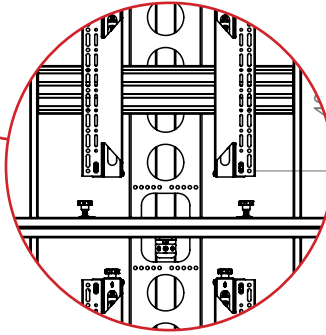
Captive fast-fit nuts and screws make assembly and disassembly quick and easy



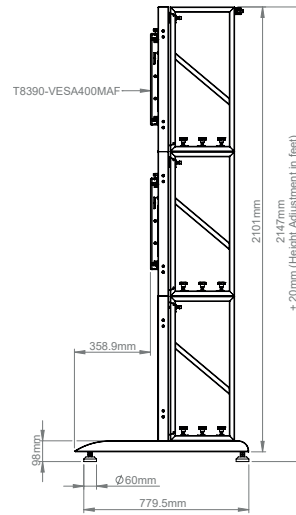
Modular design allows quick & easy assembly



FRONT VIEW



TOP VIEW



SIDE VIEW

NOTE: Ballast may be required. Refer to assembly leaflet

PACKING INFORMATION

PLEASE NOTE, THIS IS A MULTI-BOX ITEM

COLOUR:	ORDER REF:	EAN CODE:
Black	BT8350/B	5019318079832

*BT7564 Adapter will be supplied when the VESA pattern is 600. This will add 6mm to depth of interface arms
 Model shown is BT8350 55" version. 46" & 49" model dimensions will differ, apart from the depth, which will remain the same.

ORIGINAL DESIGNS BY B-TECH AV MOUNTS - REGISTERED DESIGNS & PATENTS APPLY

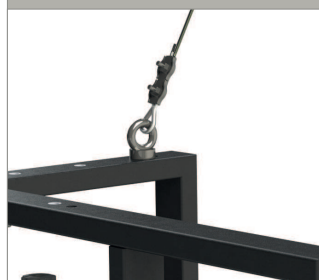
ACCESSORIES

BT8380-CASTORS



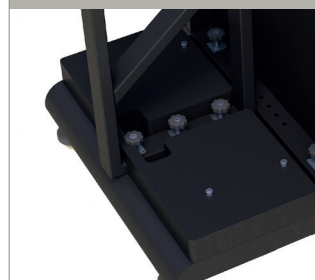
Braked Castors fit to the framework to create a mobile videowall solution

BT8350-EB



Eye Bolt allows the framework to be tied back to a wall

BT8350-WP



Stackable Ballast Plate can be used as weight for reversed base installations

BT8350-WB



Stackable Ballast Box can be used to hold your own ballast - e.g. sandbags

© 2019 B-Tech Professional Design & Manufacturing Ltd. All rights reserved.
 The information in this specification is for reference only and does not constitute an offer of any product. B-Tech Professional Design & Manufacturing Ltd. is not responsible for any damage or loss of data caused by improper use, installation, or repair of any product. B-Tech Professional Design & Manufacturing Ltd. is not responsible for any damage or loss of data caused by improper use, installation, or repair of any product. B-Tech Professional Design & Manufacturing Ltd. is not responsible for any damage or loss of data caused by improper use, installation, or repair of any product.