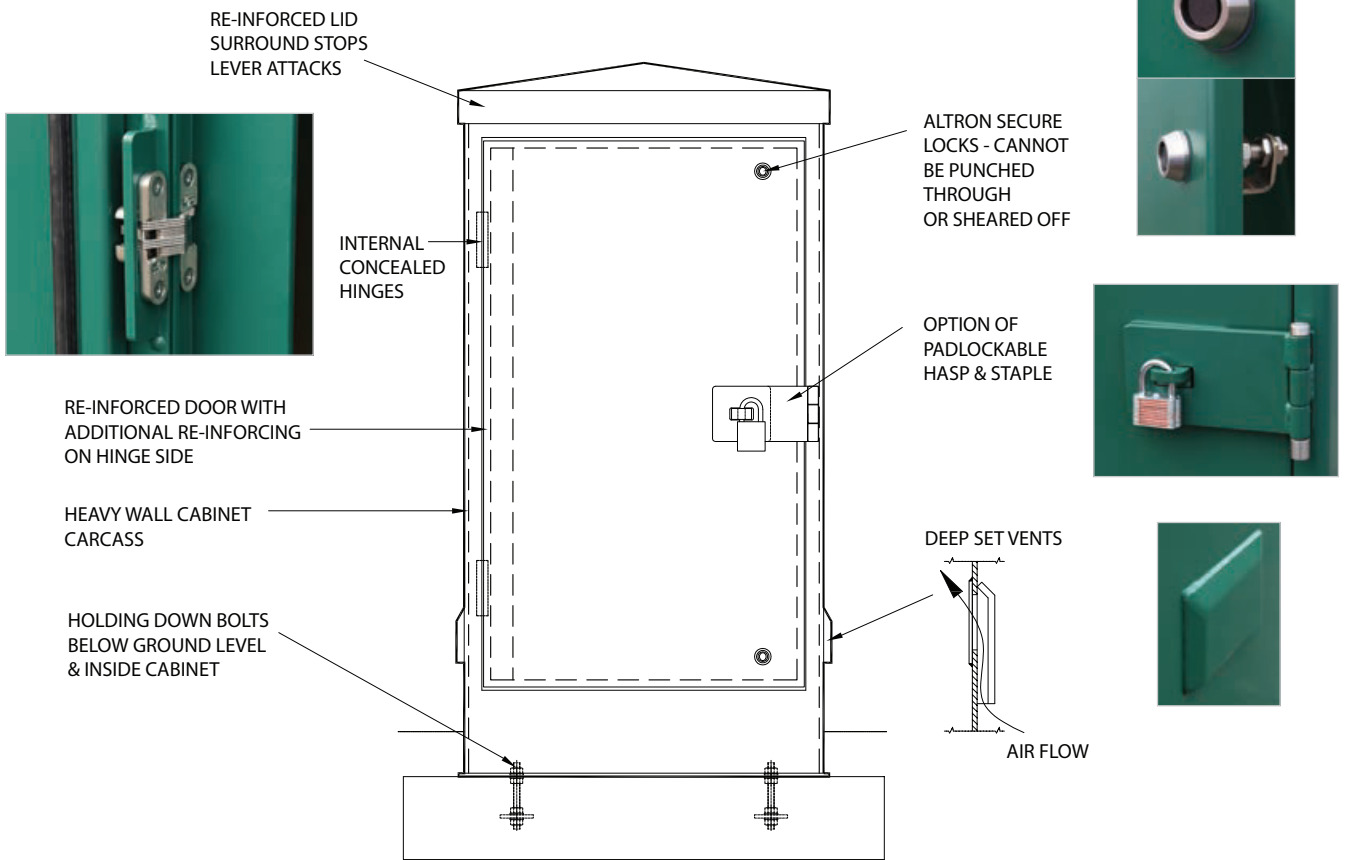
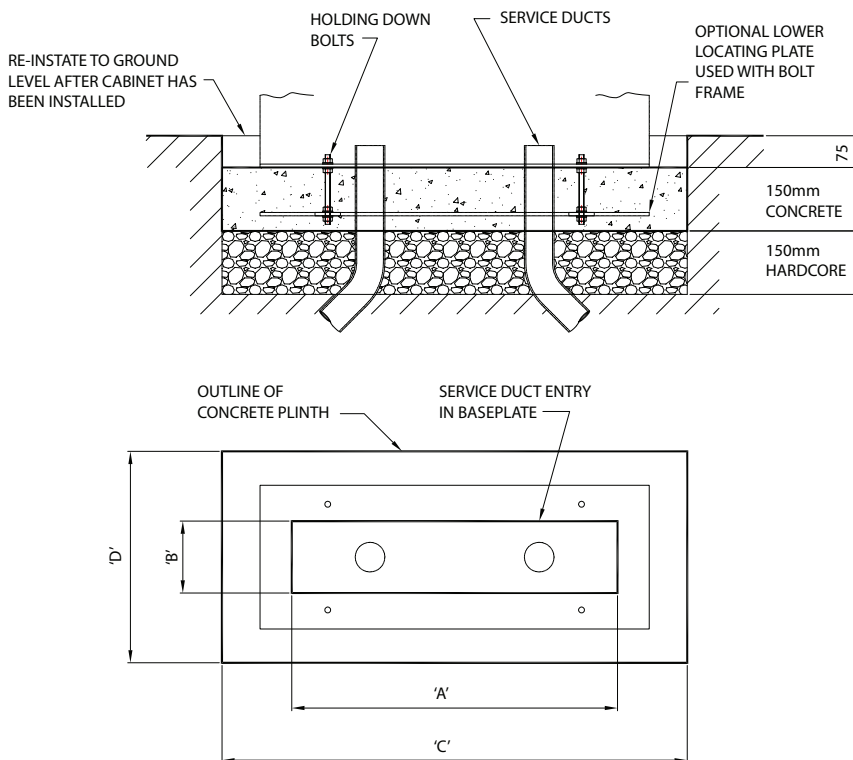


→ Cabinet Features

Security Features



Installation Details



Base Entry Details

Part number	Base plate aperture for duct entry A x B	Concrete plinth footprint C x D
ARC- * - 60 - 32	420 x 140	800 x 500
ARC- * - 90 - 32	720 x 140	1100 x 500
ARC- * - 12 - 32	1020 x 140	1400 x 500
ARC- * - 60 - 42	420 x 240	800 x 600
ARC- * - 90 - 42	720 x 240	1100 x 600
ARC- * - 12 - 42	1020 x 240	1400 x 600
AEC- * - 65 - 45	470 x 270	880 x 650
AEC- * - 65 - 65	470 x 470	880 x 850

* All height variations

- o Template and holding down bolts available
- o Bolt frame is available as an extra item